

Circuit diagram

INS

current path to the all-wheel control light

WEG

current path to the distance frequency generator

K 83

ECU

F 19!

fuse in the fuse box

S 117

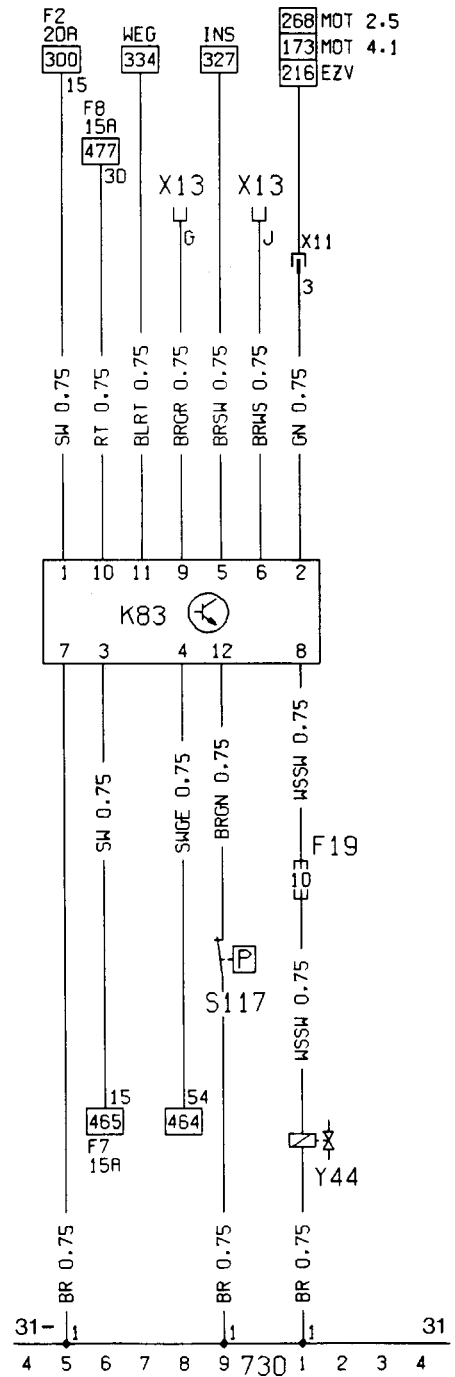
pressure switch in the control valve

Y44

magnetic switch

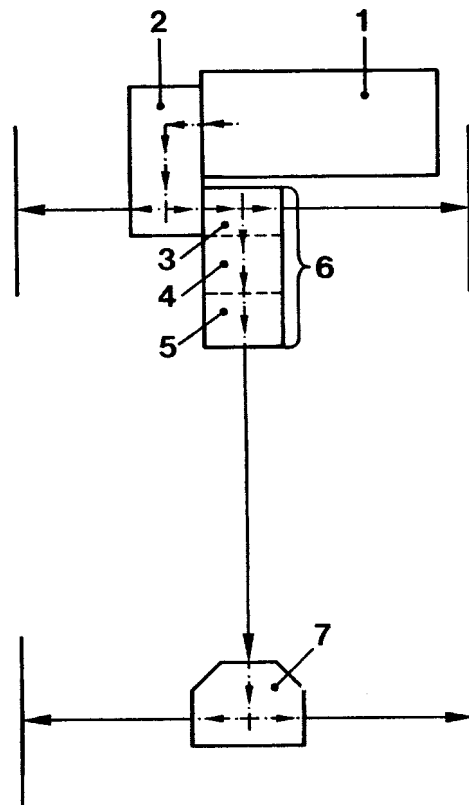
X13

diagnostic switch



VECTRA/ CALIBRA 4x4

- 1 engine
- 2 clutch manual transmission differential of front wheels
- 3 v drive with hypoid gearing
- 4 planetary gears, multiple disk clutch
- 5 visco clutch
- 6 transferbox
- 7 differentials of rear wheels



(3) V drive with hypoid gearing (new crown wheel and bevel gear manufactured in Switzerland)



(4) Planetary gear completely divided into individual parts and multiple disk clutch (lining lamellas and steel lamellas)



(5) Dismounted visco clutch



- 1 oil pump
- 2 oil pressure controllers hydraulic accumulator
- 3 control valve
- 4 pistons of the multiple disk clutch
- 5 oil reservoirs
- 6 ECU

